

An ISO 9001:2015 Certified Company

Emkey Founders & Metallurgicals

One Stop Solution for your ready to assemble
Machine parts & Sub -assemblies



Excellence and Beyond

WE ARE GOOD AT
**NEXT
CHALLENGES**

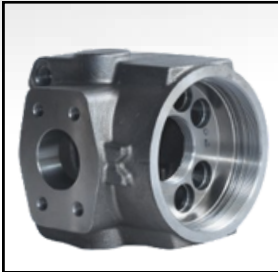
We at Emkey founders & metallurgicals are committed to become a dependable machined metallic components & sub assembly supplier with built in quality and on delivery. This will be achieved through involvement of Employees, Vendors with focus on Stock holders prosperity.

Specializes in the manufacturing and supplying of precision metal machined components and sub-assemblies.

Founded by an expert in Foundry and Engineering, EMKEY embodies an unwavering commitment to quality, executed with the finesse and ingenuity of master craftsmen.

Our dedicated Cross-Functional Team (CFT) plays a crucial role in creating seamless collaboration across disciplines to drive innovative solutions. By integrating the artistry of metallurgy with the precision of engineering, we consistently exceeding industry benchmarks and meet the diverse requirements of our clients.

OUR SUB ASSEMBLY PARTS



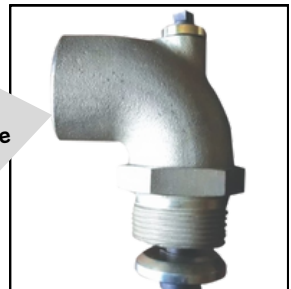
Head 8900 subassembly part
to PALL Corporation Ltd .Pune



Turbine hsg assembly to Garrett
US through TACO Pune



Poppet Valve assembly to
Hyperatek India Ltd. Bangalore



AUTOMOTIVE COMPONENTS:



Wt.-11.00 kg

Damper Housing



Wt.-1.140 kg



Wt.-1.510 kg

Rubber Dampers



Wt.-1.510 kg



Wt.-1.410 kg

Cylinder Body

GENSET COMPONENTS:



Wt.-11.760 kg

Water Pump Body 163



Wt.-11.800 kg

Water Pump Body 163



Wt.-16.250 kg

Water Pump Body 226



Wt.-12 kg

Volute Water Pump

HYDRAULIC COMPONENTS:



Wt.-13.11kg

XMC 98



Wt.-23.218 kg

XMC 104 HUB



Wt.-18.00 kg

XMC 114 HUB



Wt.-55.672 kg

XMC 116

CONSTRUCTION COMPONENTS:



Wt.-3.516 kg

Nose Part Hex22



Wt.-3.50 kg

Handle



Wt.-1.520 kg

Stainer Ring



Wt.-12.950 kg

Pump Housing

NON AUTOMOTIVE COMPONENTS:



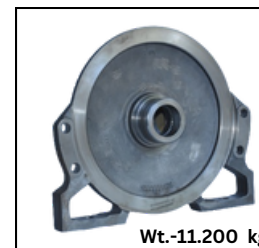
Wt.-40 kg

DOC Inlet



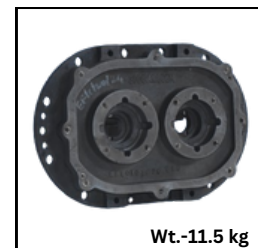
Wt.-12.740 kg

Oil Head



Wt.-11.200 kg

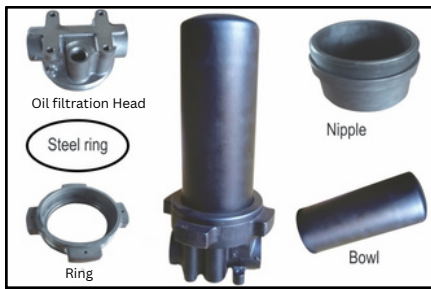
Winch Part



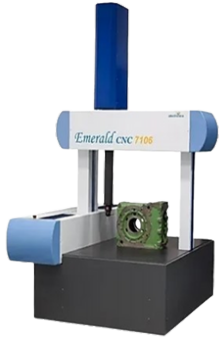
Wt.-11.5 kg

Bearing Hsg

OUR ASSEMBLY SOLUTION



SOLID FOUNDATION FOR QUALITY ASSURANCE



CMM, Trimos, Contour-tracer & Surface Tester for Inspection

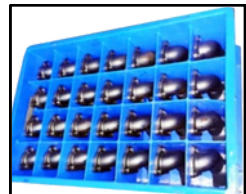
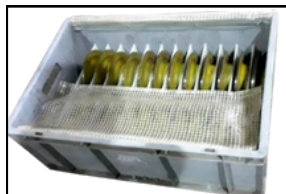
ALL MACHINING FACILITY UNDER ONE ROOF

- ROBOTIC LINE (FANUC) CNC 1,2,3 & VMC 3
- HMC (MAZAK) stroke XYZ-600*600*550
- HMC (AMS-400XL) stroke XYZ-600*450*410
- 4VMC's (FILLER/COSMOS CVM 850) with 4th Axis
- VTL (AMS30*700) Chuck Dia.400 mm.
CNC (FTC-10) FILLER/ASKAR Make Chuck Size -300 mm.



Other value additions include Painting, Phosphating, Passivation, Hot dip Galvanizing, Balancing, Leakage Testing, Honing, Heat treatment, CED coating etc.

EXPORT WORTHY PACKING & TRANSIT SAFETY



Export worthy Packing

In Returnable Crates

www.emkeyfounders.com



VISION

Emkey Founders shall be a preferred dynamic partner Providing solutions for ready to assemble machined part & sub assemblies for domestic & export market. EMKEY Founders will achieve a turnover of Rs. 100 crores by 2026/27 with YOY 20% growth in contribution.



MISSION

Emkey Founders shall supply value added Pump, Hydraulics, Safety, Power generation and Oil filtration and machined part and sub-assemblies in CI, SG and SiMo grade in the weight range 300 gms 100 kgs in Green sand/No bake/Shell molding with lean business practices and focus on stake holders prosperity.



CORE VALUES

- Customer Centric.
- Employee Empowerment.
- Business Transparency.

CORE PURPOSE

"We are committed for stakeholders prosperity."

VALUE PROPOSITON

Emkey Founders offer reliable, variety of machined parts & sub assemblies as order basket giving cost advantage in committed time frame.

SISTER COMPANIES

Magna Industries Manufacturing of shell moulded CI / SG / SiMo iron castings

Magna Ferrochem Pvt Ltd Manufacturing of foundry fluxes & all sleeves

Samarth Metallurgicals Manufacturing of resin coated sand

Samarth Foundry Services Manufacturing of heavy SG/CI castings

OUR VALUED CLIENTELS



TATA AUTOCOMP



Address : Plot No. B -80, Five Star MIDC, Kagal, Kolhapur – 416236.

Email : emkeyfounders@gmail.com

marketing@emkeyfounders.com

Mobile no : +91 9922930788, +91 8956841344, +91 8530999091

